

Deep Sky Observations

Object Description

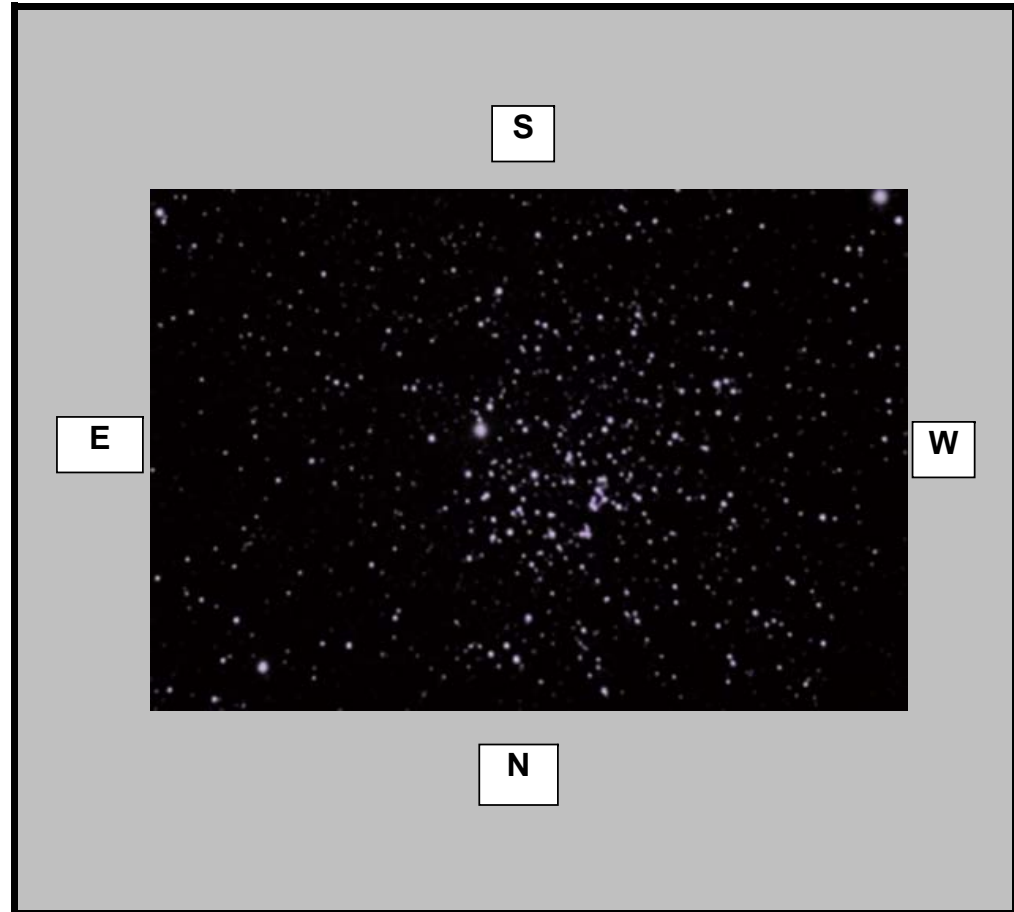
Object Name	
Messier	M52
New General Catalogue	7654
Constellation	Cassiopeia
Type	Open Cluster
Magnitude	5.0
Distance (Light Years)	5,000
Right Ascension	23 24.2
Declination	+61:35
Size	13.0'
Diameter	
Composition	

Observations

Date (DD/MM/YYYY)	31/09/2007
Time (24 hr)	23:45pm
Location	Baldrine, Isle of Man
Longitude	4°24' W
Latitude	54°12' N
Seeing (1=High - 5= Low)	1 2 3 4 5
Transparency (1=High - 5= Low)	1 2 3 4 5

Equipment

Telescope	Tak Epsilon 160
Mount	EQ6 Skyscan Pro
Eyepiece	None
Barlow	None
Camera	Canon EOS350 DSLR
Magnification (Focal Length)	FL=530mm
Field of View (True)	143.45 x 95.64 [2.49 arcsec]
Reducer	None
Filter	None
Exposures	Single 30sec exposure



Observation Notes

Taken in Full Moon
Mist & Cloud, clear in places