

Deep Sky Observations

Object Description

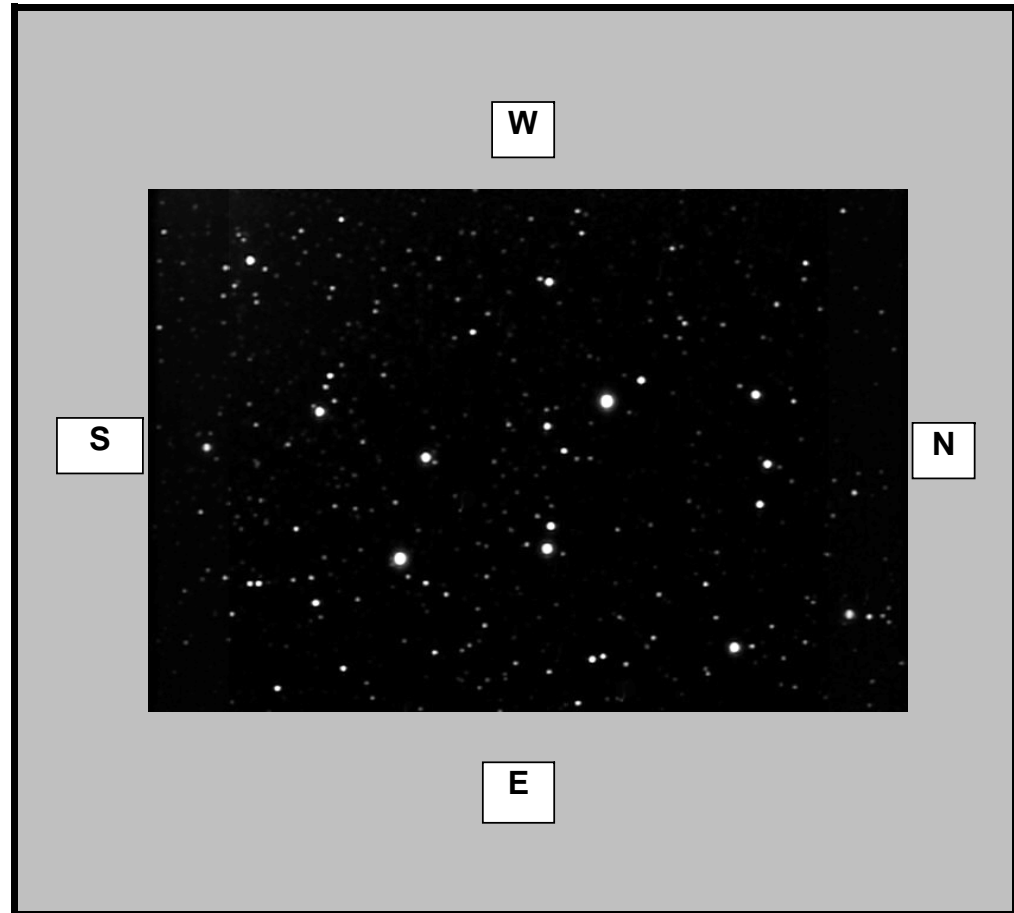
Object Name	
Messier	M39
New General Catalogue	7092
Constellation	Cygnus
Type	Open Cluster
Magnitude	4.60
Distance (Light Years)	800
Right Ascension	21 32.2
Declination	+48:26
Size	32.0'
Diameter	7 Light Years
Composition	

Observations

Date (DD/MM/YYYY)	9/06/2007
Time (24 hr)	01:20am
Location	Baldrine, Isle of Man
Longitude	4°24' W
Latitude	54°12' N
Seeing (1=High - 5= Low)	1 2 3 4 5
Transparency (1=High - 5= Low)	1 2 3 4 5

Equipment

Telescope	WO FLT110 4.3inch APO
Mount	EQ6 Skyscan Pro
Eyepiece	None
Barlow	None
Camera	GSTAR-EX CCD
Magnification (Focal Length)	FL=715mm
Field of View (True)	30.01 x 24.07 [2.44 arcsec]
Reducer	None
Filter	None
Exposures	15 Minutes 128X senseup



Observation Notes

Stacked and aligned using Registax

Processed using Registax, Photoshop & IMM

Very average conditions (slightly moist milky sky)