

Deep Sky Observations

Object Description

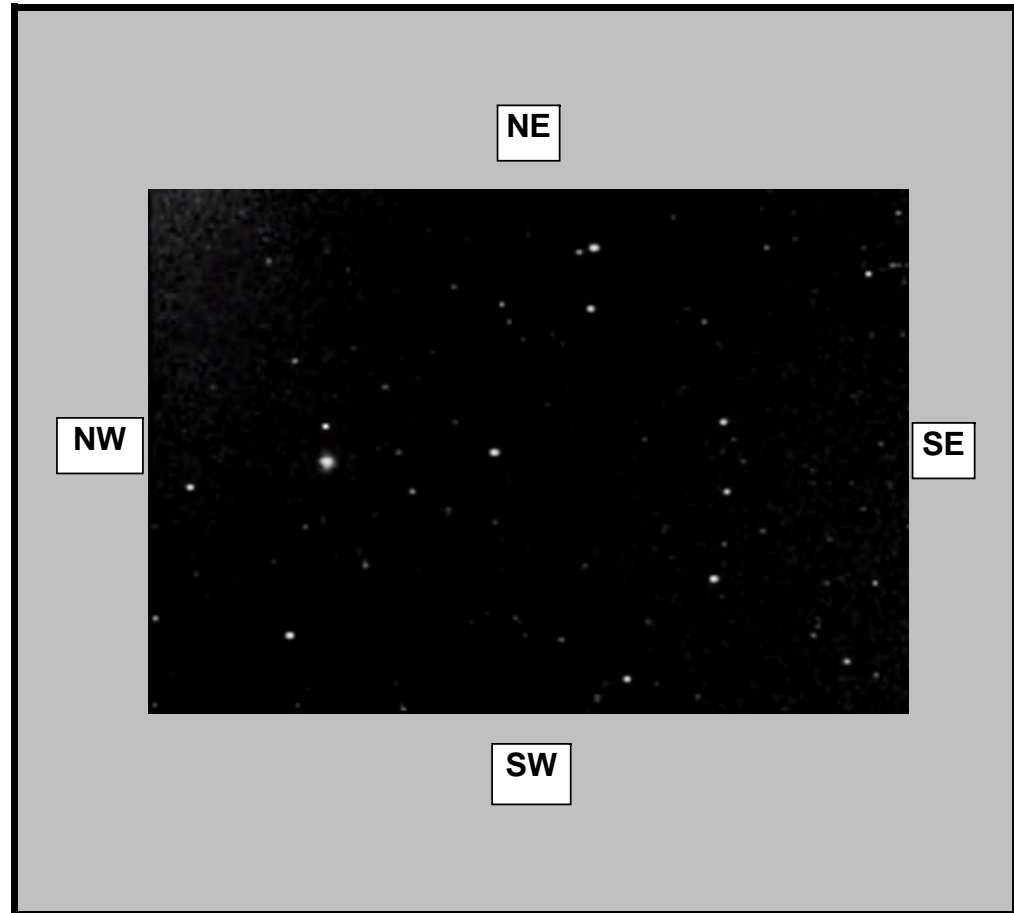
| | |
|------------------------|-----------------------|
| Object Name | |
| Messier | M103 |
| New General Catalogue | 581 |
| Constellation | Cassiopeia |
| Type | Open Cluster |
| Magnitude | 7.40 |
| Distance (Light Years) | 8,500 |
| Right Ascension | 01 33.2 |
| Declination | +60:42 |
| Size | 6.0" |
| Diameter | 15 Light Years |
| Composition | 172 Stars |

Observations

| | |
|--------------------------------|------------------------------|
| Date (DD/MM/YYYY) | 15/04/2007 |
| Time (24 hr) | 00:25am |
| Location | Baldrine, Isle of Man |
| Longitude | 4°24' W |
| Latitude | 54°12' N |
| Seeing (1=High - 5= Low) | 1 2 3 4 5 |
| Transparency (1=High - 5= Low) | 1 2 3 4 5 |

Equipment

| | |
|------------------------------|--------------------------------------|
| Telescope | WO FLT110 4.3inch APO |
| Mount | EQ6 Skyscan Pro |
| Eyepiece | None |
| Barlow | None |
| Camera | GSTAR-EX CCD |
| Magnification (Focal Length) | FL=715mm |
| Field of View (True) | 30.01 x 24.07 [2.44 arcsec] |
| Reducer | None |
| Filter | None |
| Exposures | 2 Minutes frames 128X senseup |



Observation Notes

Stacked and aligned using Registax
 Processed using Registax, Photoshop & IMM